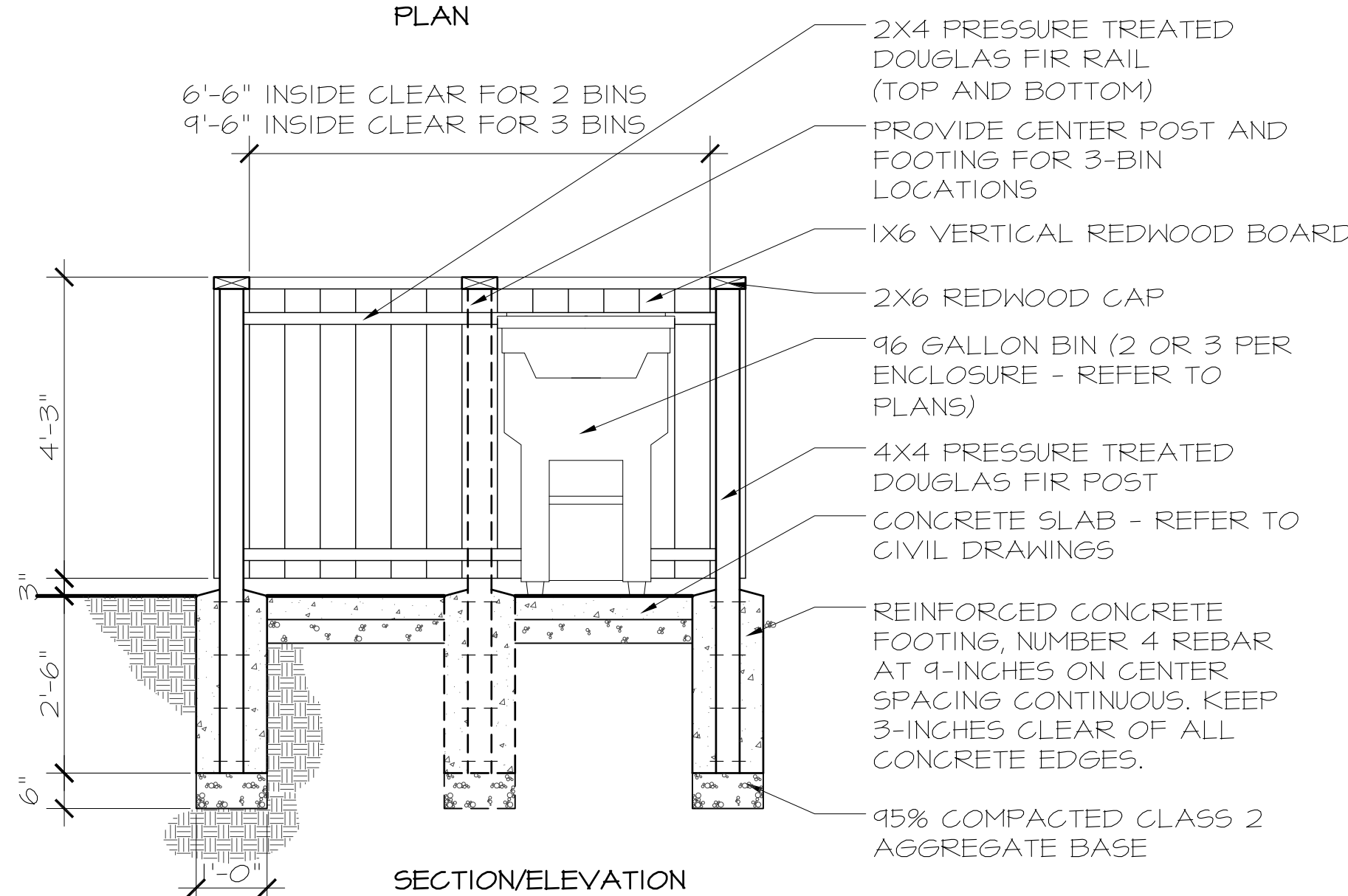
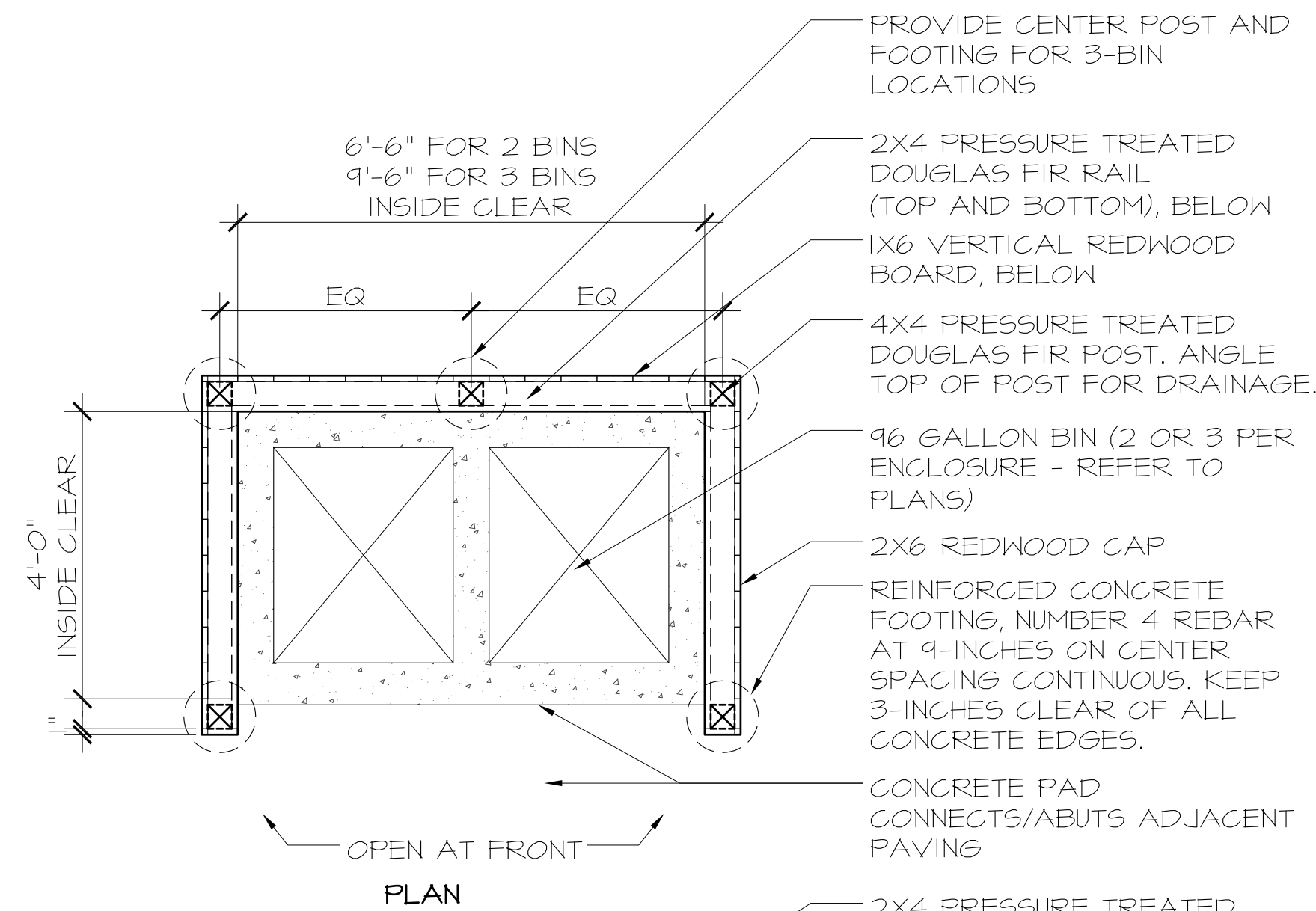
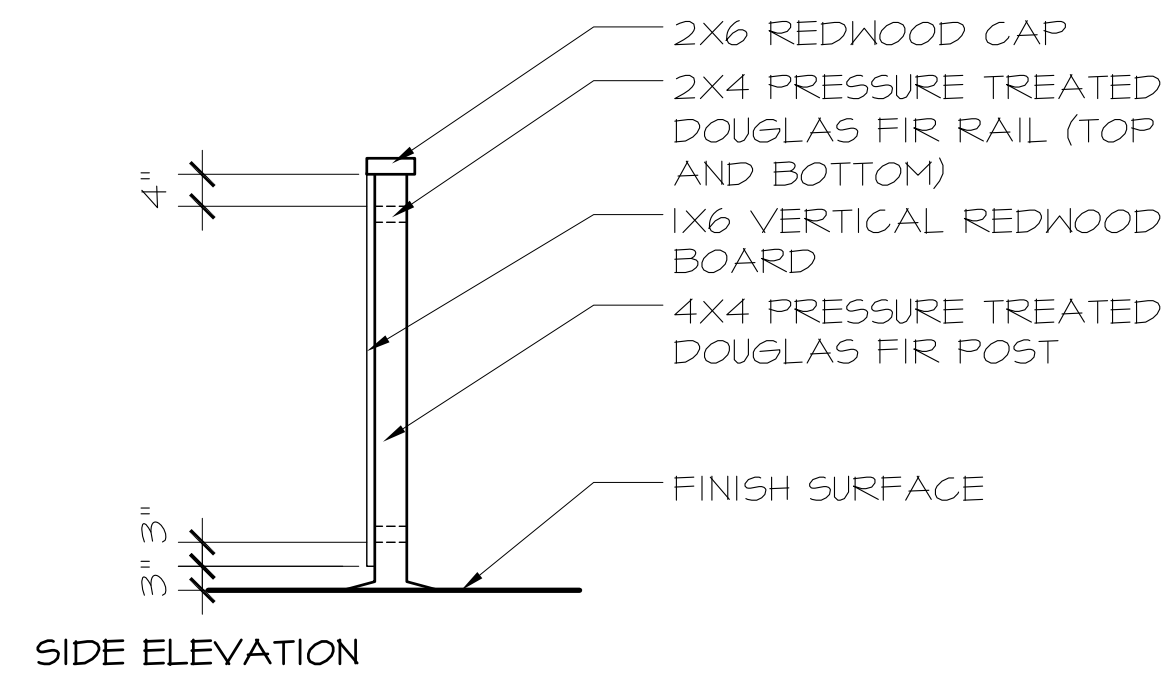


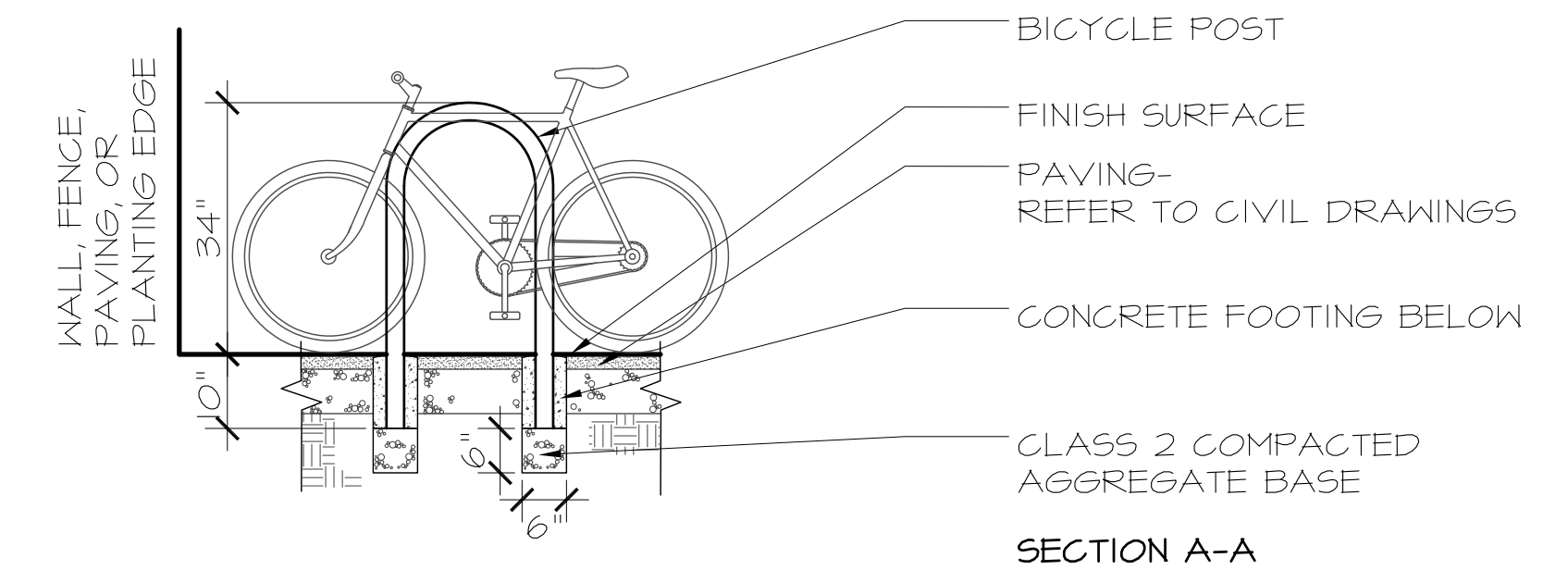
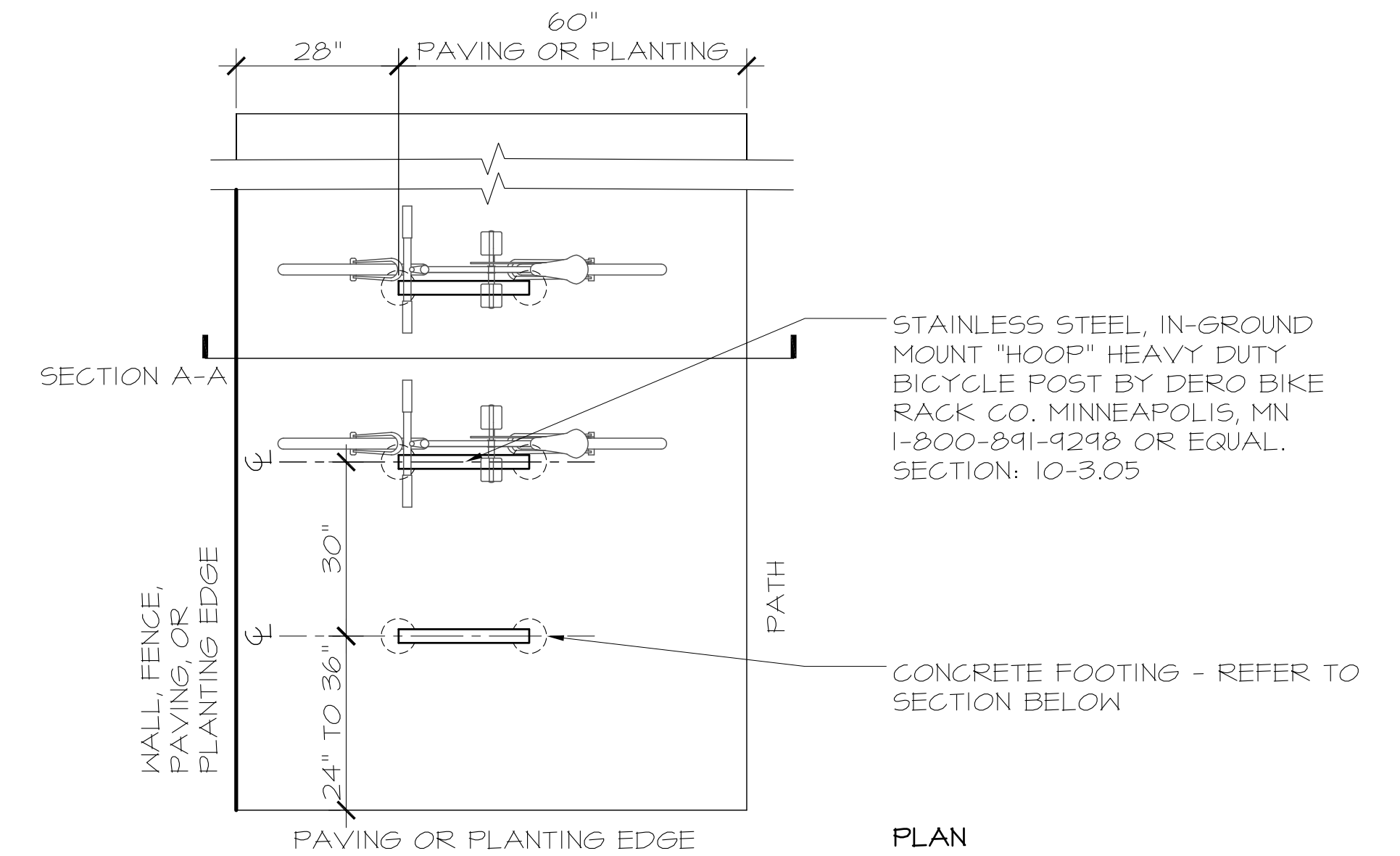
Santa Cruz County
 Design/Construction/Works
 701 Ocean St. Rm. 410
 Santa Cruz, CA 95060-4000
 Phone: (831) 454-2160
 Fax: (831) 454-2385

MATERIALS DETAILS
 EAST CLIFF DRIVE PARKWAY PROJECT
 32nd AVENUE TO 41st AVENUE
 County of Santa Cruz
 California



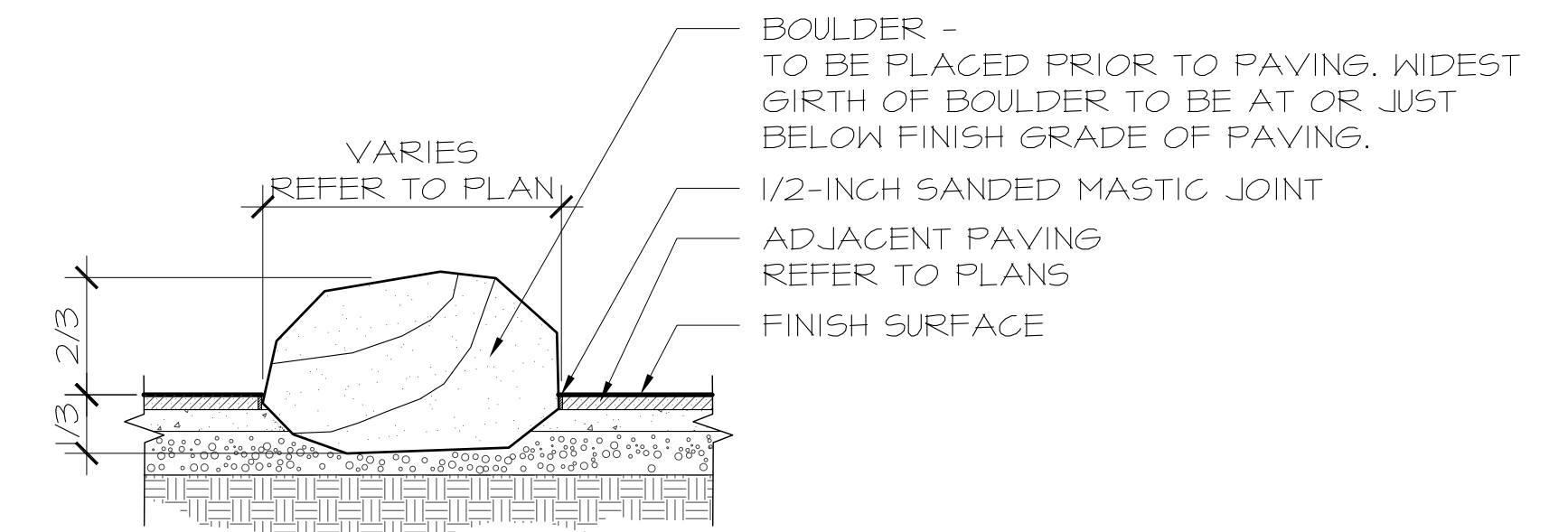
- NOTES:
- ALL WOOD TO BE CONSTRUCTION GRADE. FREE OF KNOTS AND DEFECTS.
 - ALL HARDWARE AND ATTACHMENTS TO BE STAINLESS STEEL, ALL SCREWS, NO NAILS.
 - TRASH ENCLOSURE TO ACCOMMODATE 2 OR 3 BINS. REFER TO PLANS FOR LOCATION AND NUMBER OF BINS FOR EACH ENCLOSURE.

3 TRASH ENCLOSURE DETAIL
 NTS



- NOTES:
- CONTRACTOR TO MARK BICYCLE POST LOCATIONS IN FIELD FOR REVIEW FOR COUNTY REPRESENTATIVE APPROVAL PRIOR TO INSTALLATION.
 - PLEASURE POINT PARK: BICYCLE POSTS IN THIS LOCATION TO BE INSTALLED IN THICKENED CONCRETE SUB-SLAB DEPTH: 6-INCHES. PLACE CORROSION RESISTANT SLEEVE (MINIMUM 4-INCH DIAMETER) IN EXACT LOCATION OF POST. KEEP TOP OF SLEEVE LEVEL WITH FINISH SURFACE. FILL WITH SAND OR SECURE IN-PLACE DURING CONCRETE POUR. REMOVE SAND PRIOR TO INSTALLING POST(S). AFTER CONCRETE HAS CURED, EMBED POSTS INTO THICKENED SLAB, EXTEND POST INTO GRAVEL 1-INCH.

2 BICYCLE POSTS
 NTS



- NOTES:
- SEE DRAWING FOR LOCATIONS. SOME LOCATIONS MAY BE LOCATED IN PLANTING AND PAVING AREAS. USE SIMILAR DETAIL.
 - BOULDERS ARE STORED IN COUNTY CORPORATION YARD LOCATED AT: 2700 BROMMER STREET, SANTA CRUZ, CA 95062
 - BOULDER DIMENSIONS AND LOCATIONS TO BE DETERMINED.
 - BOULDER DIMENSIONS AND LOCATIONS TO BE DETERMINED.

1 BOULDER SETTING DETAIL IN PAVING
 NTS

NOTE: ORIGINAL SHEET SIZE IS 24" X 36".

REV	BY	DATE	DESCRIPTION
1		03/22/10	75% SUBMITTAL
2		10/08/10	95% SUBMITTAL
3		01/12/11	BID SET

DATE: 01/12/2011
 SCALE: NOT TO SCALE
 DESIGNED BY: JLJ
 DRAFTED BY: ED/MO
 CHECKED BY: JLJ
 JOB NO.: 08-150
 FILE: 11 EAST CLIFF PARKWAY MATERIALS DETAILS.rvt